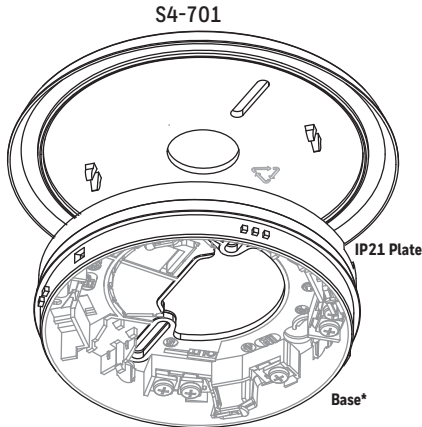


IP21 Plate and Base

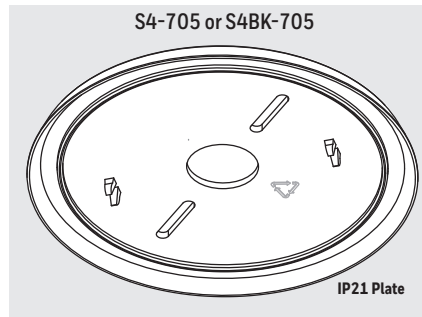
(S4-701, S4-700, S4-705, S4BK-700 & S4BK-705)

IP plate is only needed for VADs and it is a requirement to achieve compliance when used with certified EN54 Part 23 device

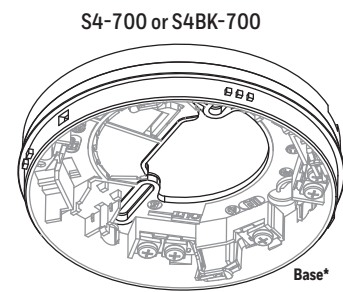
Base alone is used with Sensor device and non EN54 Pt 23 compliant device



S4-701 is supplied as a two part assembly with IP21 Plate (S4-705) and Base (S4-700) and IP21 Plate a 1 per pack



This IP plate is supplied in 5 per pack



S4-700 Base is supplied in 5 per pack

S4BK-700 Base is supplied individually

* Technical data for Base (S4-700 & S4BK-700) is covered in the leaflet 4188-778

i Sensor Sounder only device do not require IP21 Plate to be fitted.

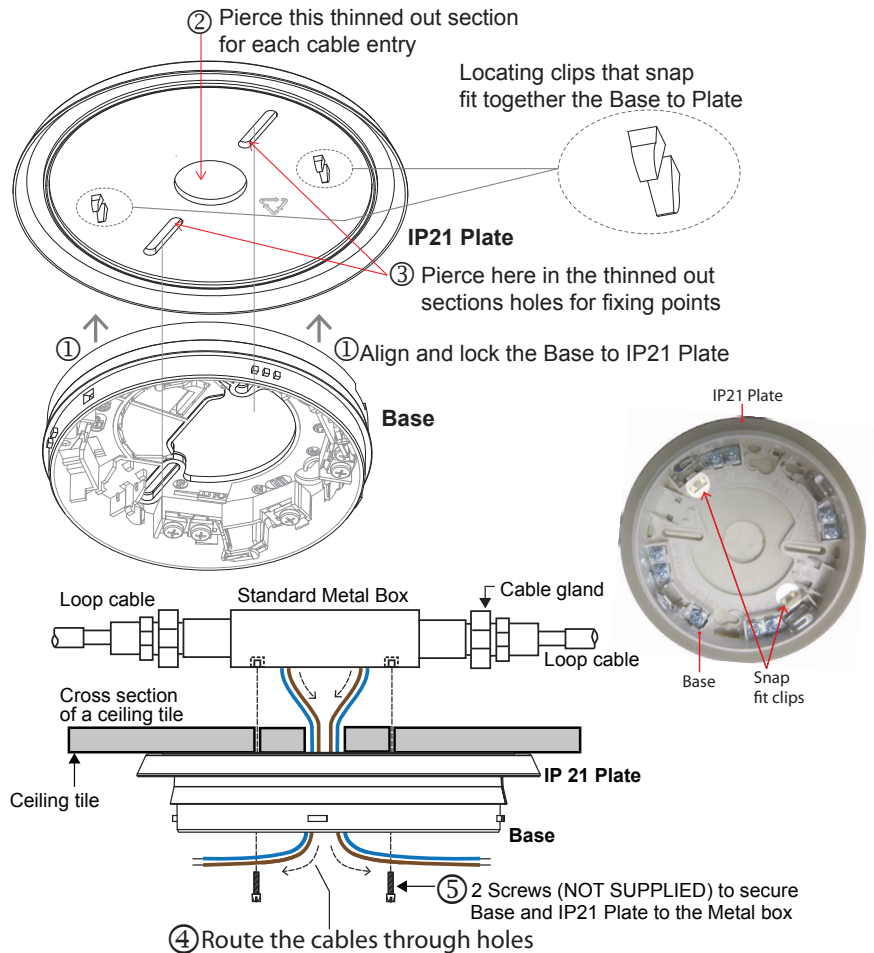
Technical Data - IP21 plate

| | |
|--------------|--|
| Overall size | 136mm diameter x 8mm depth (with base 27mm depth) |
| Material | TPE |
| Colour | White (RAL 9010) or Black (as material colour ABS HF380 Black) |
| Flammability | HB-75 |
| Weight | 46g approximately |

Installation

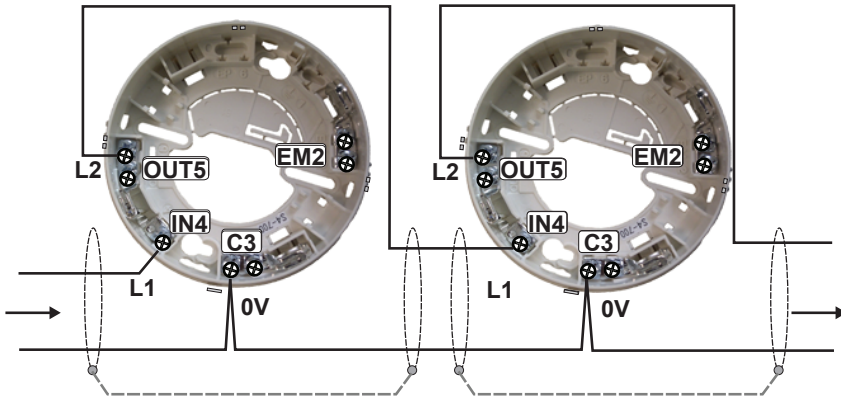
i Ignore the illustrated information relating to ceiling tile when installing onto a solid ceiling surface.

- If the parts are separate then align the elongated holes on the *Base* with the *IP21 Plate* ① and compress the two parts until they are locked together.
- Pierce a hole through the thinned out circle section ② on the *IP21 Plate* for each cable. Ensure each pierced hole is smaller than the diameter of cable. This provides a seal to form between cable outer skin and thinned out section on the *IP21 Plate*.
- The mounting holes are at 50mm centres on a standard metal box, so pierce holes on the inner edge of the elongated slots of the *IP21 Plate* ③ for fixing screws. This ensures all the parts are centrally aligned.
- Route the cables ④ from the Metal box through the ceiling tile, *IP21 Plate* and the *Base* as shown.
- Secure the *Base*, *IP21 Plate* to the Metal box using suitable fixing screws ⑤.
- Connect the cables to the terminals in the *Base*, see section headed 'Wiring'.

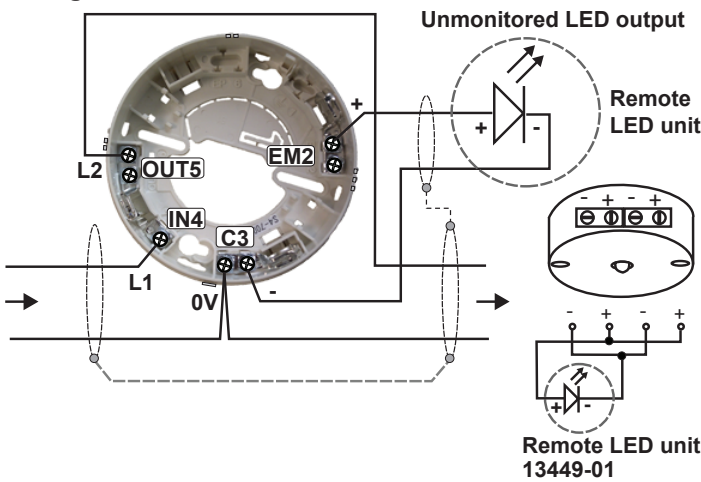


Wiring

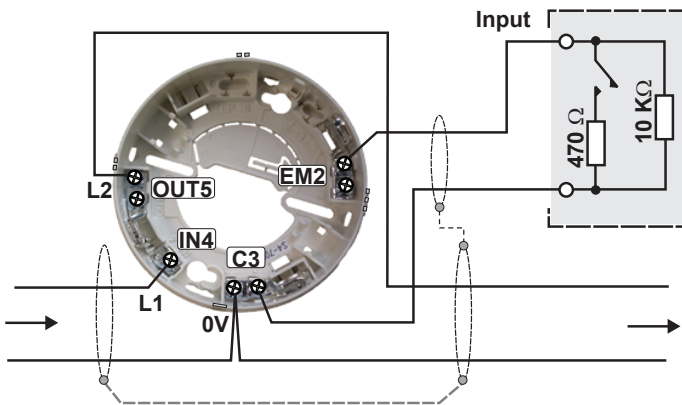
In - Out wiring to bases





Wiring a Remote LED




Wiring a monitored input



 **WEEE Directive:**
At the end of their useful life, the packaging, product and batteries should be disposed of via a suitable recycling centre.
Do not dispose of with your normal household waste.
Do not burn.

 At the end of their useful life, the packaging, product and batteries should be disposed of via a suitable recycling centre and in accordance with national or local legislation.

Honeywell Gent reserves the right to revise this publication from time to time and make changes to the content hereof without obligation to notify any person of such revisions of changes.

| | | |
|--|---|--|
|  | Hamilton Industrial Park, Waterside Road, Leicester LE5 1TN, UK. | Websites: www.gent.co.uk www.smsfire.co.uk |
| | Telephone: Gent +44 (0) 116 246 2000 SMS +44 (0) 116 246 2100 | |