

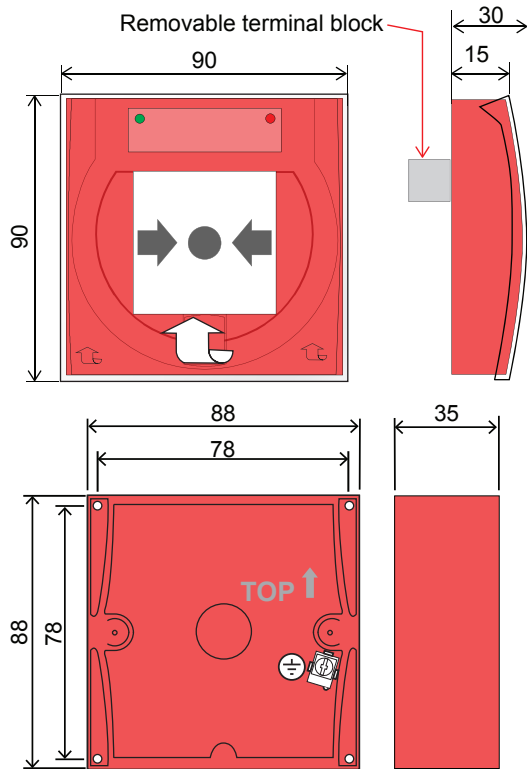
Manual Call Point (EP) (SEN-805-EP)



i This EP MCP is supplied complete with back-box and its IP rating is dependent on supplied back-box being used.
A standard MCP back-box or a 3rd party back-box cannot be used.

This leaflet covers the Environmentally protected manual call point (SEN-805-EP), which is suitable for installation in SMS analogue addressable fire alarm system.

- SEN-890 spare Resettable Element (pack of 10)
- S4-34899 spare Test key (pack of 25)



Technical Data

Standard	EN54: Part 11: 2001 & EN54-17:2005	
IP Rating	IP67	
Dimensions	height 90 mm x width 90 mm x depth 65 mm	
Full assembly weight	250g - approximate	
Operating temperature	-25°C to +70°C	
Storage temperature	-30°C to +70°C	
Relative Humidity (Non condensing)	up to 95% Temperature +25°C to +55°C	
Emission	BS EN 61000-6-3:2007 + A1: 2011 Class B limits	
Immunity	BS EN 50130-4: 2011	
Colour	Red (similar to RAL3020)	
Case	ABS engineering plastic	
Active indicator	Red LED with Yellow tab for Test or Fire event	
Status indicator	Green LED for status and Find device	
Test / Operation	Test or operation of the call point is by using a test key or by pressing the resettable element	
Terminals for wiring	2.5mm ² maximum	
LPCB Approval	Approved	
Operating voltage	35V to 48V	
EN54-17 data	Vmax 48V	IC max 0.8A
	Vnom 40V	IS max 1.25A
	Vmin 35V	IL max 20µA
	VSO max 16V	ZC max 0.13Ω
	VSO min 8V	

Installation

Ensure all the parts are supplied:

	Component	Quantity
	Call point assembly	1
	Test key	1
	Long screws and washers	2
	Rubber seal	2
	Instructions	1

Symbols on product

Protective Earth connection terminal.

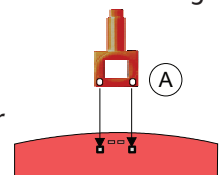
The WEEE symbol. It indicates the product is to be recycled and not thrown away.

CE The CE compliance logo. This product is in conformity with the relevant European Union harmonisation legislation.

RoHS The RoHS compliance logo. The RoHS directive restricts the use of certain hazardous substances commonly used in electronic and electronic equipment.

To disengage outer main assembly

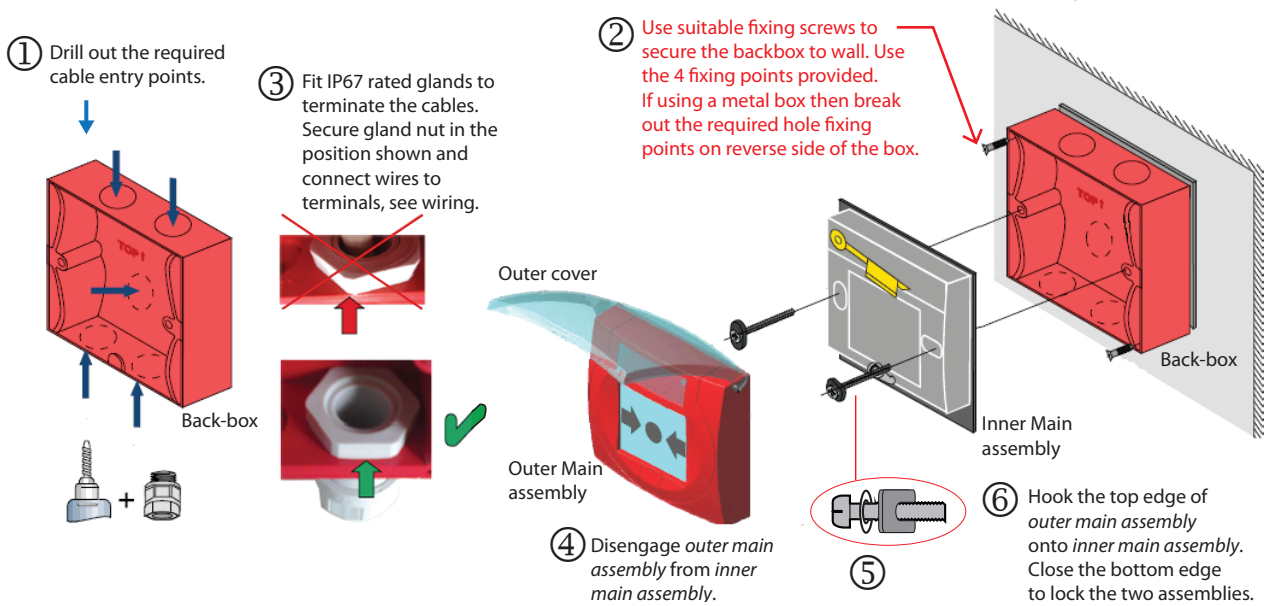
Disengage the *outer main assembly* from *inner main assembly* use the end of a test key 'A' to press the retaining clips and lift out the *outer main assembly* from the bottom edge, see illustration on reverse side. To refit: hook the top edge of the *outer main assembly* onto the *inner main assembly* and then close the bottom edge to lock the assemblies together.



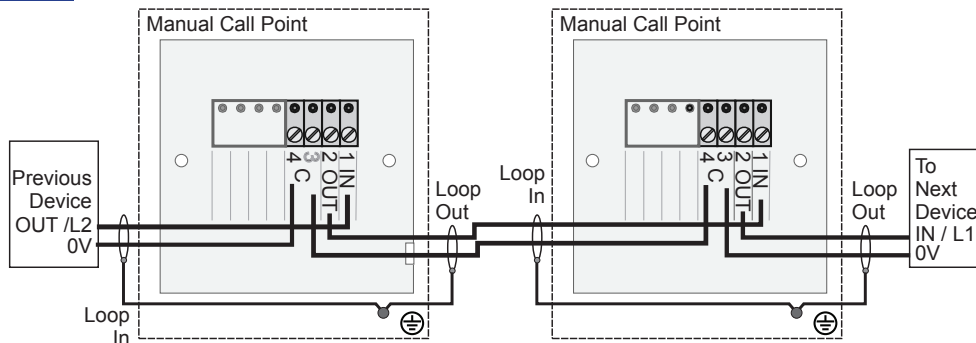
Manual Call Point (EP)

Mounting

Carry out steps ① to ⑥ to install the call point.



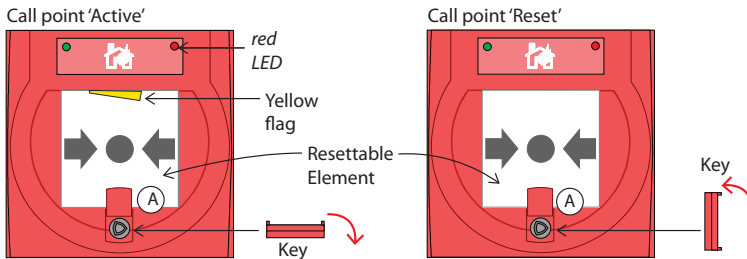
Wiring



i Installer to provide provision for loop cable screen continuity through each device for armoured or similar cable.

Emergency operation

Lift up the transparent cover and press the centre part of the resettable element on the call point inwards to activate the call point, the yellow tab will become visible and the red LED will start to flash.





To reset the 'Resettable element'


After emergency operation of a call point slide the cover 'A' upwards to expose the keyhole. Insert the test key into the keyhole and then turn the test key clockwise a quarter turn, you will hear/feel mechanism engage and then turn the key anticlockwise a quarter turn until the yellow flag moves upwards and is not visible.

Test operation


To test a call point is operating correctly, lift up the transparent cover, slide the keyhole cover 'A' upwards to expose the key hole. Insert the test key in the keyhole and rotate it clockwise a quarter turn, this drops the element and the yellow tab down and will activate the call point. Red LED will start to flash to show active MCP. To reset the call point turn key a quarter turn anticlockwise until the yellow tab moves upwards, then reset panel.

 2811	
Honeywell Life Safety Romania SRL St Salcomilor nr bis 305500 Lugoj, Romania 16	
DoP 122-CPR-2015	Product No. SEN-805-EP
EN54-11 & 17 SEN-805-EP (EN54-11 & 17) Intended for use in fire detection and fire alarm systems in and around buildings	
Refer to DOP 122-CPR-2015 for level or class of performance declared, for details see website www.smsfire.co.uk	

 At the end of their useful life, the packaging, product and batteries should be disposed of via a suitable recycling centre and in accordance with national or local legislation.

 **WEEE Directive:**
 At the end of their useful life, the packaging, product and batteries should be disposed of via a suitable recycling centre.
 Do not dispose of with your normal household waste.
 Do not burn.

Gent by Honeywell reserves the right to revise this publication from time to time and make changes to the content hereof without obligation to notify any person of such revisions of changes.

	Hamilton Industrial Park, Waterside Road, Leicester LE5 1TN, UK.		Website: www.smsfire.co.uk
	Telephone: +44 (0) 116 246 2100	Tech. Support www.smstoolbox.co.uk	Fax (UK) +44 (0) 116 246 2016