


Installation Stainless Steel Doors for Vigilon Control and Repeat panels



These instructions cover the following products:
 VIG-RPT-DOOR-SS
 Stainless steel door for Repeat panel
 VIG-DOOR-SS
 Stainless steel door for Vigilon panel

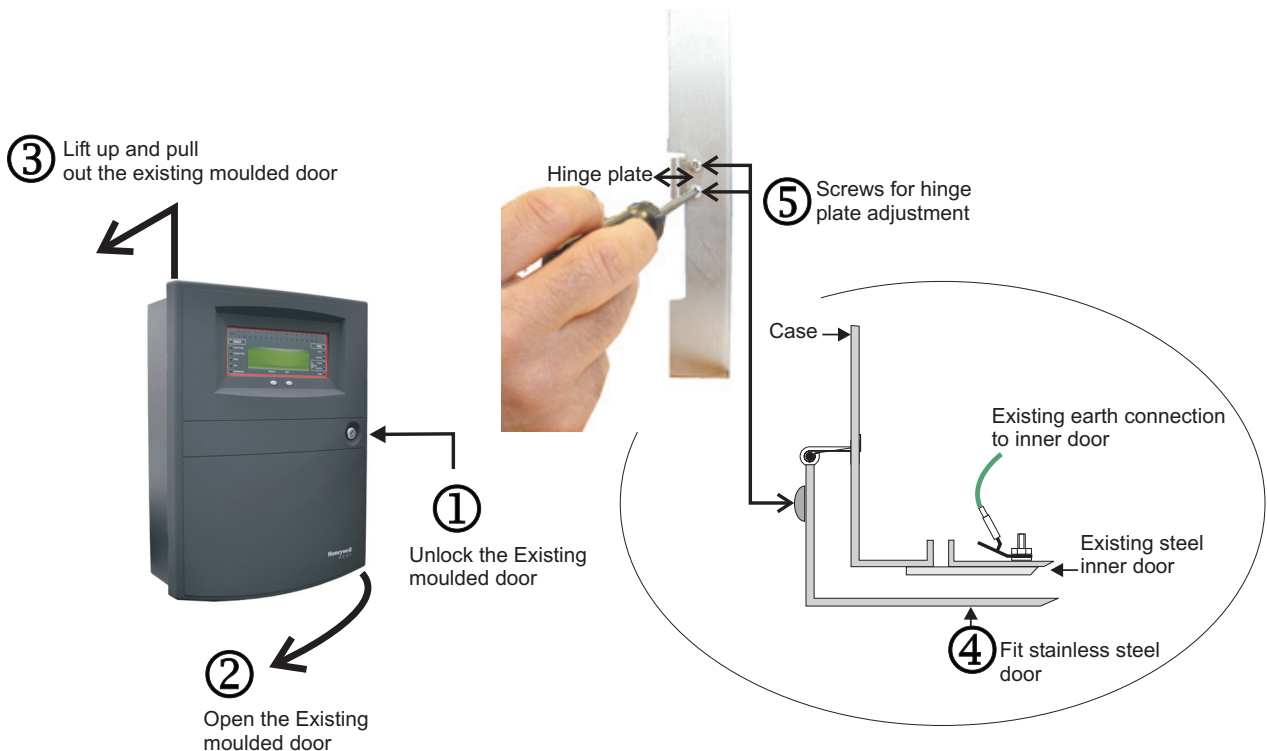
Parts supplied with a stainless steel door assembly are:


Description	Quantity
Stainless steel door	1
Keys (for the stainless steel door)	1


 **These stainless steel doors are NOT SUITABLE for external environment.**

Where a panel is mounted on the external wall of a building then it must be fitted inside a separate weatherproof enclosure.

- a. Unlock the existing moulded door ① on the panel.
- b. Open ② and remove ③ the existing moulded door from the panel case.
- c. Fit the stainless door ④ onto the panel case.
- d. Where necessary adjust the hingeplates on the stainless steel door and ensure the door can be opened and closed easily, the hinge plate adjustment is by means of fixing screws ⑤ on the door.



 At the end of their useful life, the packaging, product and batteries should be disposed of via a suitable recycling centre and in accordance with national or local legislation.

 **WEEE Directive:**
 At the end of their useful life, the packaging, product and batteries should be disposed of via a suitable recycling centre. Do not dispose of with your normal household waste. Do not burn.

Honeywell Gent reserves the right to revise this publication from time to time and make changes to the content hereof without obligation to notify any person of such revisions of changes.

Honeywell GENT	Hamilton Industrial Park, Waterside Road, Leicester LE5 1TN, UK		Website: www.gent.co.uk
	Telephone +44 (0) 116 246 2000	Technical Support: www.gentexpert.co.uk	Fax (UK): +44 (0)116 246 2300