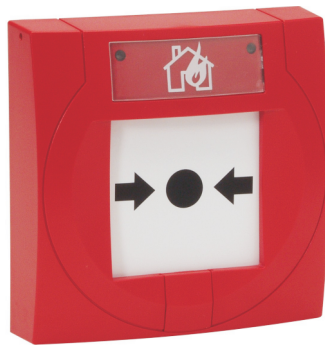


# Data and Installation

## Manual Call Points (MCPs)

### S4-348XX range

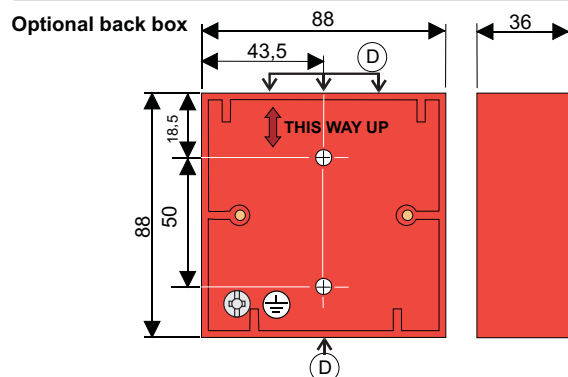
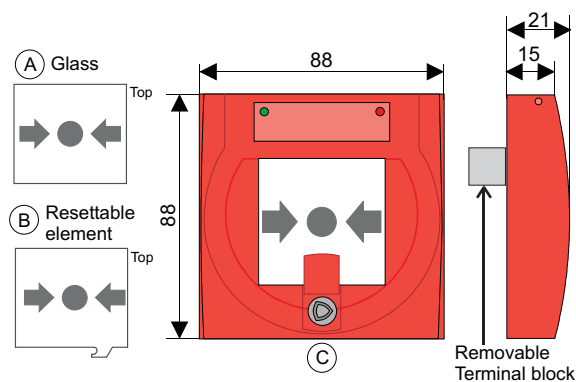


042/bq/01  
042/bq/02  
042/bq/03  
042/bq/04

The manual call points (MCPs) covered in this leaflet are suitable for installation in GENT analogue addressable fire alarm system. The product range covered include:

- S4-34800 MCP (Glass)
- S4-34842 MCP (Glass) with Protective cover
- S4-34805 MCP with resettable Element
- S4-34845 MCP with resettable Element and Protective cover
- S4-34890 Resettable Element for MCP (Pack of 10)
- S4-34891 Glass for MCP (Pack of 10)
- S4-34892 Protective cover for MCP (Pack of 5)
- S4-34895 Surface Back Box for MCP - Red Plastic (Pack of 10)

#### Call point assembly



The optional back box has recessed centres 'D', 3 at the top and 1 at the bottom, a maximum of 2 are usable.

#### Technical data

Standard	EN54: Part 11 : 2001 EN54-17 : 2005	
Dimensions in mm	height 88 x width 88 x depth 21 or depth 57 when surface mounted	
Full assembly weight	110g - approximate	
Storage temperature	-30°C to +70°C	
Operating temperature	-25°C to +70°C	
Relative Humidity (Non condensing)	up to 95% Temperature +25°C to +55°C	
Emission	BS EN 61000-6-3:2007 + A1: 2011	
Immunity	BS EN 50130-4 : 2011	
IP Rating	IP43 estimated standard type IP55 estimated with protective cover and back box	
Colour	Red (similar to RAL3020)	
Case	ABS engineering plastic	
Indicators	Normal	Green LED for status and find device
	Active	Red LED and Yellow tab for active or Fire indication
Testing	The operation of the MCP is tested by using a test key	
Terminals	2.5mm <sup>2</sup> maximum	
LPCB Approved	S4-34842, S4-34805, S4-34845 and S4-34800	
Operating voltage	35V to 48V	
EN54-17 data	V <sub>max</sub> 48V	I <sub>C</sub> max 0.8A
	V <sub>nom</sub> 40V	I <sub>S</sub> max 1.25A
	V <sub>min</sub> 35V	I <sub>L</sub> max 20 A
	V <sub>SO</sub> max 16V	Z <sub>C</sub> max 0.13
	V <sub>SO</sub> min 8V	

#### Symbols on product

- Protective Earth connection terminal.
- The WEEE symbol. It indicates this product is to be recycled and not thrown away.
- The CE compliance logo. This product is in conformity with the relevant European Union harmonisation legislation.
- The RoHS compliance logo. The RoHS directive restricts the use of certain hazardous substances commonly used in electronic and electronic equipment.
- The UKCA (UK Conformity Assessed) marking is a new UK product marking that is used for goods being placed on the market in Great Britain (England, Wales and Scotland).

#### Spare parts

	Components	Quantity
	Call point assembly	1
	Earth Strap	1
	Test Key	1
	Long Screw	2
	Instruction leaflet	1

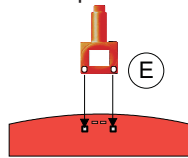
**Installation**

- a) Check the contents of the Spares pack.
- b) Open out the required cable entry points and mount the standard electrical box or the optional red back box S4-34895 onto a flat wall surface using suitable fixings.

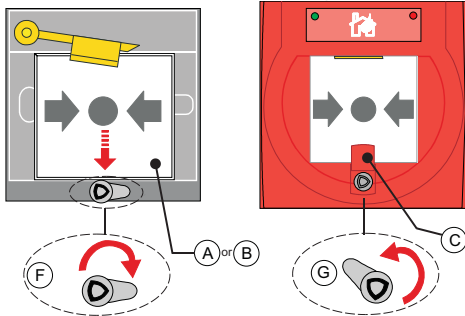
**i** When semi flush fixing the assembly use a standard electrical box must first be flushed into the wall before the outer assembly is fitted.

- c) Feed the fire rated cables through the entry holes and terminate each cable entry at the back box. Use the earth strap or the earth point in the back box to maintain loop cable earth continuity. Connect the loop cable to the terminals.

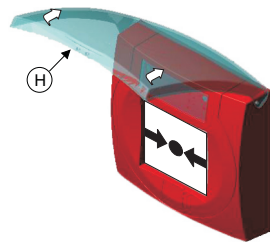
- d) Disengage front cover from the call point assembly using the end of the test key 'E' and lift out the cover from the bottom edge.



- e) Secure the call point assembly to the back box using the 2 long screws supplied.
- f) Re-assemble the glass or resettable element, use the test key to turn the tab to position 'F' and insert the glass 'A' or optional resettable element 'B' (see previous page for information on parts 'A' and 'B').



- g) Hook the front cover onto the top edge of the call point assembly and then push the bottom edge down until it click shuts. Check both hooks on the top of the front cover are locked onto the call point assembly.



- h) Turn the test key anticlockwise to position 'G' (not visible) such that the glass or optional resettable element is held under the yellow arm.
- i) Where applicable, ensure the protective cover 'H' is securely fitted to the call point assembly.

**Test operation**

To test the call point is operating correctly, slide the cover 'C' upwards to expose the key hole. Insert the test key in the keyhole and rotate it clockwise a quarter turn, this drops the glass/element and the yellow tab down and will activate the call point. Apply the reverse procedure to return the call point to a normal operating condition.

**Emergency operation**

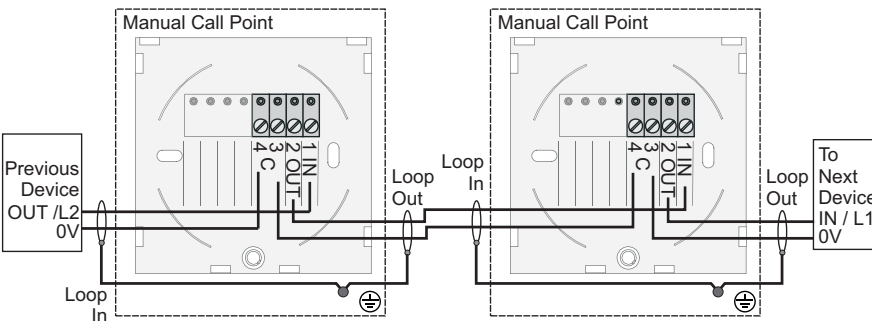
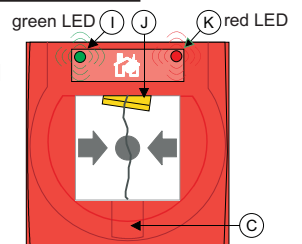
Lift up the protective cover if fitted and press the centre inwards to activate the call point, the yellow tab 'J' will become visible and the red LED 'K' is flashing.

**Replacing the Glass**

**!** Open the front cover by following procedure d) and carefully remove broken glass. Take appropriate precautions when clearing broken glass to prevent injury. Replace the glass by following procedure f), g) and h).

**Resetting the Resettable element**

Slide the cover 'C' upwards to expose the key hole. Insert the test key in the keyhole and turn it clockwise to position 'F' (not visible). Turn the test key anticlockwise to position 'G' (not visible) to reset the call point.



**WEEE Directive:**  
At the end of their useful life, the packaging, product and batteries should be disposed of via a suitable recycling centre.  
Do not dispose of with your normal household waste. Do not burn.

At the end of their useful life, the packaging, product and batteries should be disposed of via a suitable recycling centre and in accordance with national or local legislation.

<b>UK</b> <b>CA</b> 0832	<b>CE</b> 2831
Gent by Honeywell	
Manufactured by: Honeywell Life Safety Systems-Romania, Street Str, Salcamilor 2 bis-Lugoij 16	
DoP 020-CPR-2013	Product No S4-34800
020-CPR-2013	S4-34842
020-CPR-2013	S4-34805
020-CPR-2013	S4-34845
<b>EN54-11: 2001 &amp; EN54-17: 2005</b>	
S4-34800 (EN54 -11 & 17)	
S4-34843 (EN54 -11 & 17)	
S4-34805 (EN54 -11 & 17)	
S4-34845 (EN54 -11 & 17)	
<b>Intended for use in fire detection and fire alarm systems in and around buildings</b>	
Refer to DOP 020-CPR-2013 for level or class of performance declared, for details see website <a href="http://www.gent.co.uk">www.gent.co.uk</a>	

Honeywell Gent reserves the right to revise this publication from time to time and make changes to the content hereof without obligation to notify any person of such revisions of changes.

<b>Honeywell</b> GENT	Honeywell Building Technologies, Building 5 Carlton Park, King Edward Avenue, Narborough, Leicester, LE19 0AL	Website: <a href="http://www.gent.co.uk">www.gent.co.uk</a>
	Telephone +44 (0) 203 409 1779	Website: <a href="http://www.gentexpert.co.uk">www.gentexpert.co.uk</a>