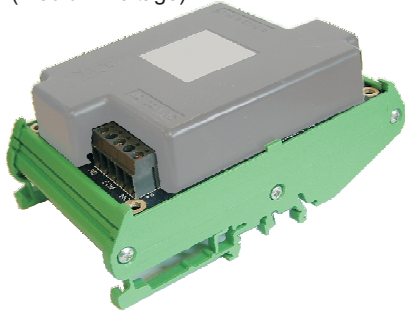


**S4-34411**  
Single Output Interface Module  
DIN rail mountable  
(Medium Voltage)



**S4-34415**  
Single Output Interface PCB with cover  
(Medium Voltage) in a metal box

These instructions cover the medium voltage interface module and accessories.

These S4 Single Output MV Interfaces are designed for use with any Vigilon/34000 fire alarm control panel based system. Each module includes loop isolators for device isolation.



The S4 Single Output MV Interface modules are suitable for mains switching, they

provide normally closed and normally open contacts rated at 13A 250Vac (nominal 230Vac) resistive load.

Each module use one of 200 available device addresses on a loop and respond to regular polls from the control panel reporting the type of device.

### Symbols on product



Electric shock hazard.



Protective Earth connection terminal.



The WEEE symbol. It indicates the product is to be recycled and not thrown away.



The CE compliance logo. This product is in conformity with the relevant European Union harmonisation legislation.

**RoHS** The RoHS compliance logo. The RoHS directive restricts the use of certain hazardous substances commonly used in electronic and electronic equipment.

### Features

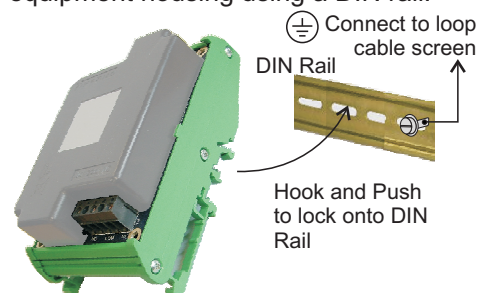
- Analogue addressable communications
- Built-in type identification automatically identifies these devices to the control panel
- Reliable communication technique with high noise immunity
- Soft or SAFE addressing
- Common mounting options including surface mount and DIN rail mount
- EN54-17:2005 and EN54-18:2005

### Cables

Any suitably rated cable may be used for wiring the output lines to drive the required load. For information on cables recommended for wiring the loop circuits see instructions supplied with the fire control panel.


### Installation

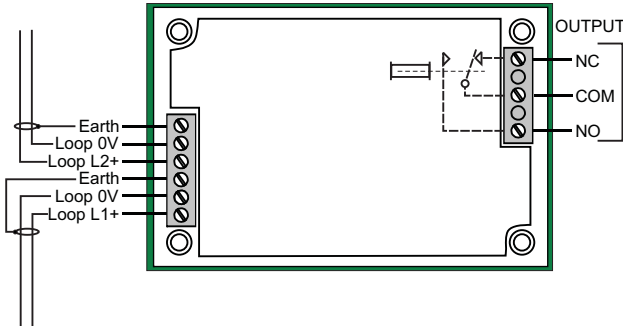
The S4 Single Output Interface module the DIN rail mountable product (S4-34411) can be mounted in other equipment housing using a DIN rail.




The S4 Single Output Interface module is also available in a metal box (S4-34415). The box provides cable termination points on the enclosure.

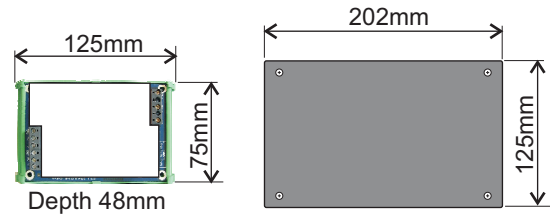
**Connection diagram**

 **The loop cable screen must be continued through each interface module. If a module is mounted on a DIN rail, then the DIN rail must be electrically connected to the loop cable screen.**



 **The output contacts are rated at 13A 230V ac resistive load. In order to meet the requirements of European Safety Standards, ensure that all cables carrying voltages in excess of 48V (Live and Neutral) are suitably fused.**

**Technical data**



PCB on DIN rail mountable module      PCB in metal box

LPCB Approved	EN54-17:2005 & EN54-18:2005
Dimensions	See illustrations
Weight	DIN mountable:138g PCB with cover in metal box:800g
Storage temperature	-30°C to +70°C
Operating temperature	-10°C to +60°C
Relative Humidity	Up to 95% - Temperature +5°C to +45°C(Non condensing)
Emission	BS EN 61000-6-3:2001 Residential, Commercial & Light Industry <b>Class B limits</b>
Immunity	BS EN50130-4: 1996: Part 4
LVD	BS EN 60950-2002
Ingress Protection	Metal box - IP40 estimated
Colour - Metal Box	Dark Grey
Output	Single pole change over contacts rated at 13A 230V ac Resistive load.
Contact ratings	Type 1hp @ 240V ac, 1/2hp @ 120V ac (UL508)
	Cycle 6x10 <sup>3</sup>
Terminals	2.5mm <sup>2</sup>
Operating voltage	35V - 48V
EN54-17 data	V <sub>max</sub> 48V    I <sub>L</sub> max 50µA V <sub>nom</sub> 40V    I <sub>S</sub> max 1.25A V <sub>min</sub> 24V    I <sub>C</sub> max 0.8A V <sub>SO</sub> max 16V    Z <sub>C</sub> max 0.2Ω V <sub>SO</sub> min 8V
Panel compatibility	Compatible with LPC ≥ V4.33 / V3.92 & MCC ≥ V4.31 / V3.90

**CE**  
2811

**Gent by Honeywell (Novar Systems Limited)**  
Manufactured by: Honeywell Life Safety Systems,  
140 Waterside Road, Hamilton Industrial Park,  
Leicester, LE5 1TN, United Kingdom

DoP	Product No.
022-CPR-2013	S4-34411
022-CPR-2013	S4-34415


13


EN54-17:2005, EN54-18:2005

S4-34411	(EN54-17 & 18)
S4-34415	(EN54-17 & 18)

**Intended for use in fire detection and fire alarm systems in and around buildings**

Refer to DOP 022-CPR-2013 for level or class of performance declared, for details see website [www.gent.co.uk](http://www.gent.co.uk)

 At the end of their useful life, the packaging, product and batteries should be disposed of via a suitable recycling centre and in accordance with national or local legislation.

 **WEEE Directive:**  
At the end of their useful life, the packaging, product and batteries should be disposed of via a suitable recycling centre.  
Do not dispose of with your normal household waste.  
Do not burn.

Honeywell Gent reserves the right to revise this publication from time to time and make changes to the content hereof without obligation to notify any person of such revisions of changes.

<b>Honeywell</b> GENT	Hamilton Industrial Park, Waterside Road, Leicester LE5 1TN, UK	Website: <a href="http://www.gent.co.uk">www.gent.co.uk</a>
	Telephone: +44 (0) 203 409 1779	Technical support: <a href="http://www.gentexpert.co.uk">www.gentexpert.co.uk</a> Fax (UK): +44 (0)116 246 2300