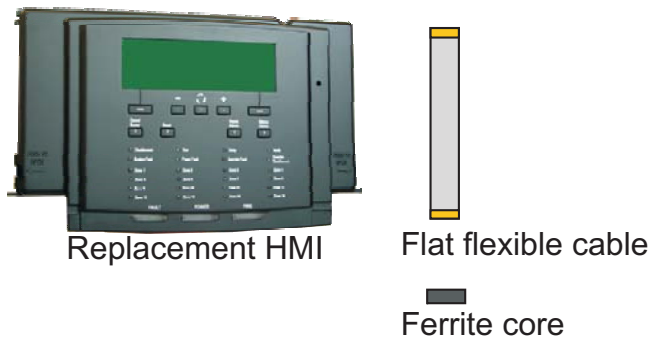



# Replacement HMI assembly for Nano panel (NS-HMI)



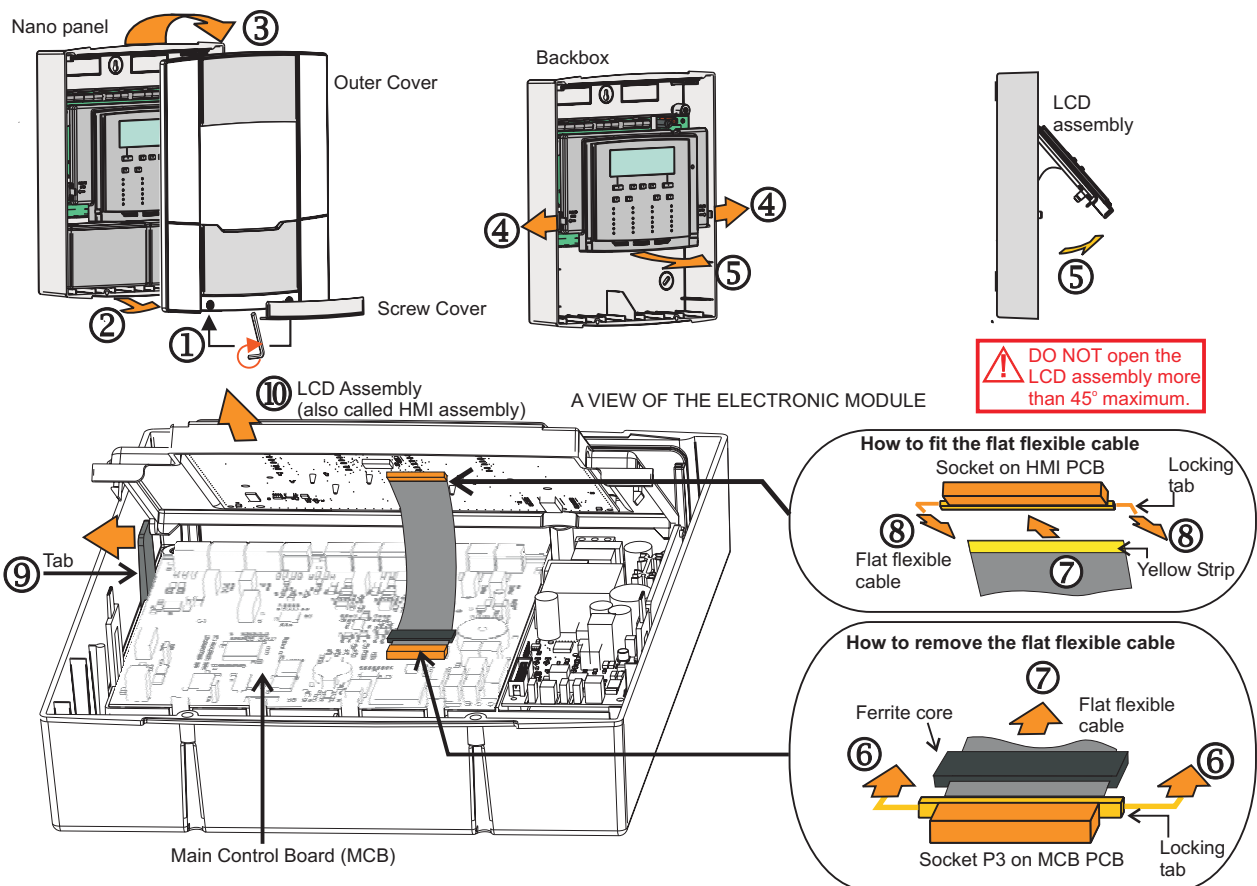
The Replacement HMI assembly (Part No: NS-HMI) is a spare replacement part for the Nano panel.



**Before removal of the existing HMI assembly from the Nano panel, first isolate the mains power supply to the panel.**

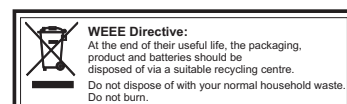
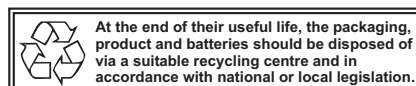
## Removal

- a. Remove the 'Screw cover' plate, which is held in by magnets. Open the fixing screws ① and then open out the bottom ② of the 'Outer Cover' and lift it up and out ③ and then open the 'HMI assembly'.
- b. Disconnect the battery supply by removing a connection lead from a battery terminal.
- c. Disconnect the 'flat flexible cable' from the MCB socket P3:
  - Pull out the 'locking tab' ⑥.
  - Remove the cable from the socket ⑦.
  - Then remove the 'Ferrite core' from the cable.
- d. Flex out the hinge tab ⑨, located on the top-right of the 'electronic module' and disengage the 'HMI Assembly' from the 'electronic module' and carefully remove the 'HMI assembly' ⑩.



**Replacement**

- a. Fit the new **replacement 'HMI assembly'** to the electronic module. Hold the 'HMI assembly' at a 45° angle and engage it into the right pivot point and then the left pivot point, you will need to flex out the hinge tab ⑨ on the electronic module.
- b. Fit the new 'flat flexible cable' into the socket on the HMI PCB.
  - Ensure the socket 'locking tab' ⑧ is pulled out before inserting the cable ⑦ into the socket.
  - Also ensure the yellow strip is on the cable is visible, see illustration.
  - Lock the cable by compressing the 'locking tab' into the socket.
- c. Insert the new 'Ferrite core' on to the 'flat flexible cable'. Open out the 'locking tab' ⑥ on the socket P3 on MCB. Insert the other end of the 'flat flexible cable' into socket P3 and then lock the cable by compressing the 'locking tab' into the socket.
- f. Reconnect the battery supply.
- g. Refit the 'Outer Cover' and secure it to the backbox and then fit the 'Screw Cover' plate.
- h. Switch On the mains supply to the panel.



Gent by Honeywell reserves the right to revise this publication from time to time and make changes to the content hereof without obligation to notify any person of such revisions of changes.

<p><b>GENT</b> by Honeywell</p>	Hamilton Industrial Park, Waterside Road, Leicester LE5 1TN, UK	Website: <a href="http://www.gent.co.uk">www.gent.co.uk</a>
	Telephone: +44 (0) 116 246 2000	Fax (UK): +44 (0)116 246 2300