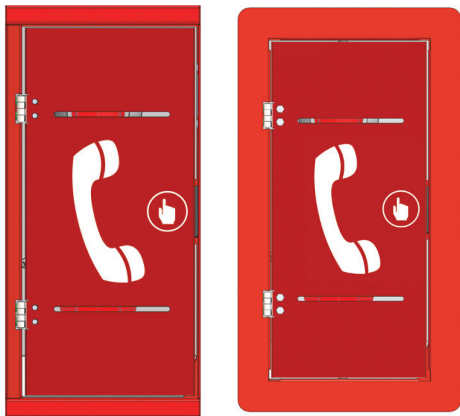


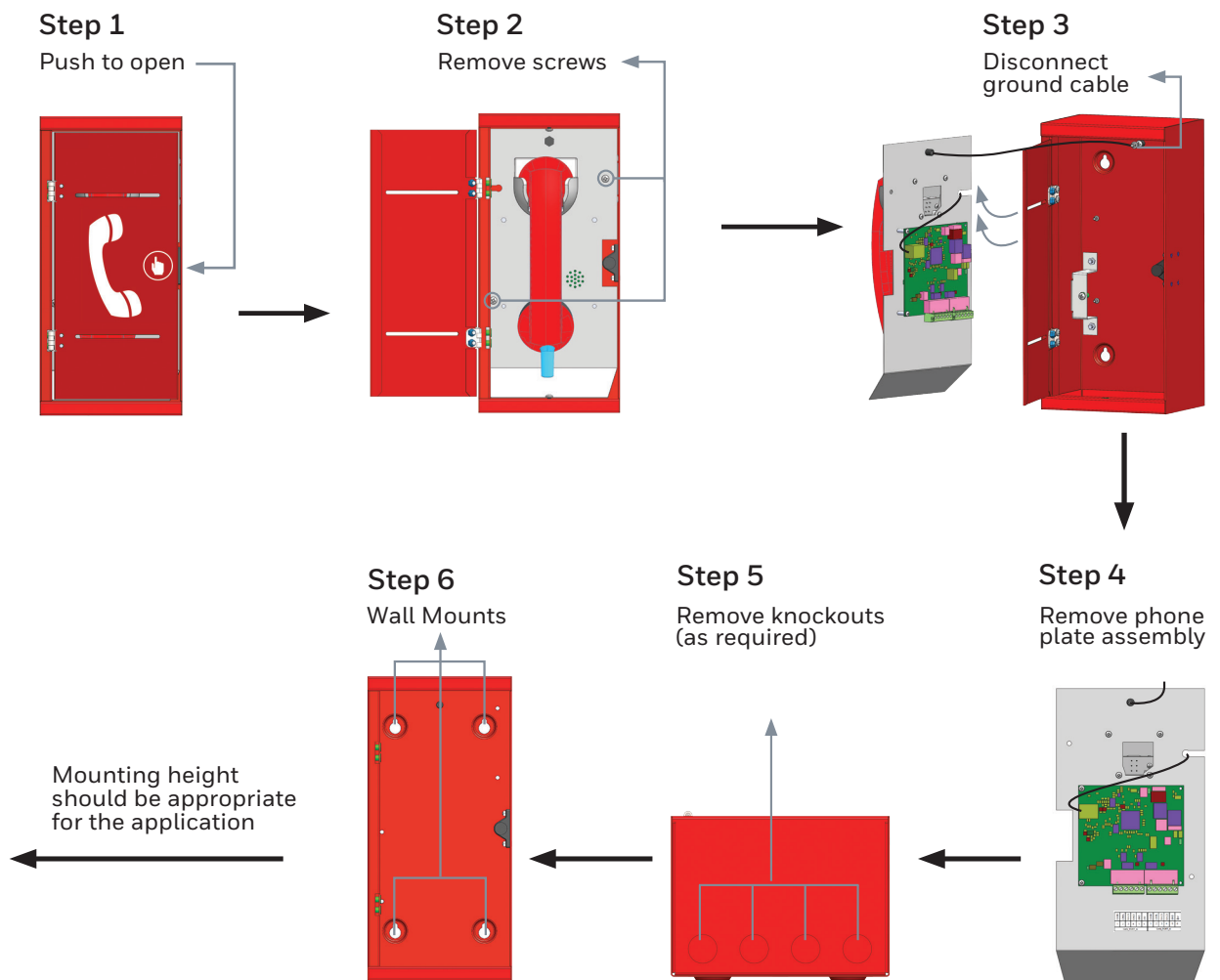
Installation instructions

Digital Handset Type A



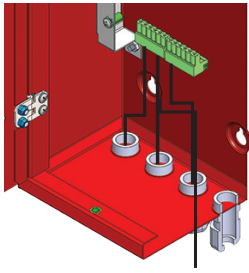
Product number	Description
EVCS-HSA-RS-D	Digital Handset Type A Red Surface
TA16-BEZ	Handset Type A Red Flush Fix
EVCS-HSA-SS-D	Digital Handset Type A SS Surface
TA16-SS-BEZ	Handset Type A SS Flush Fix

Finish & mounting	Red, Stainless steel; Surface, Flush
Cabling	Enhanced FP200 2x2 / 4X1 Core; 1.5 sq mm
Configuration & distance	Loop configuration; Maximum distance between two units - 200 metre
Dimension	H 320 x W 152 x D 114 mm (2.2 Kg)
Knockouts	4 x 20 mm dia

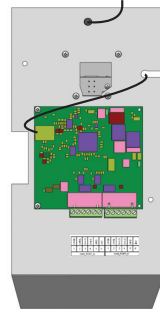


Honeywell

Step 7
Insert connectors
in PCB



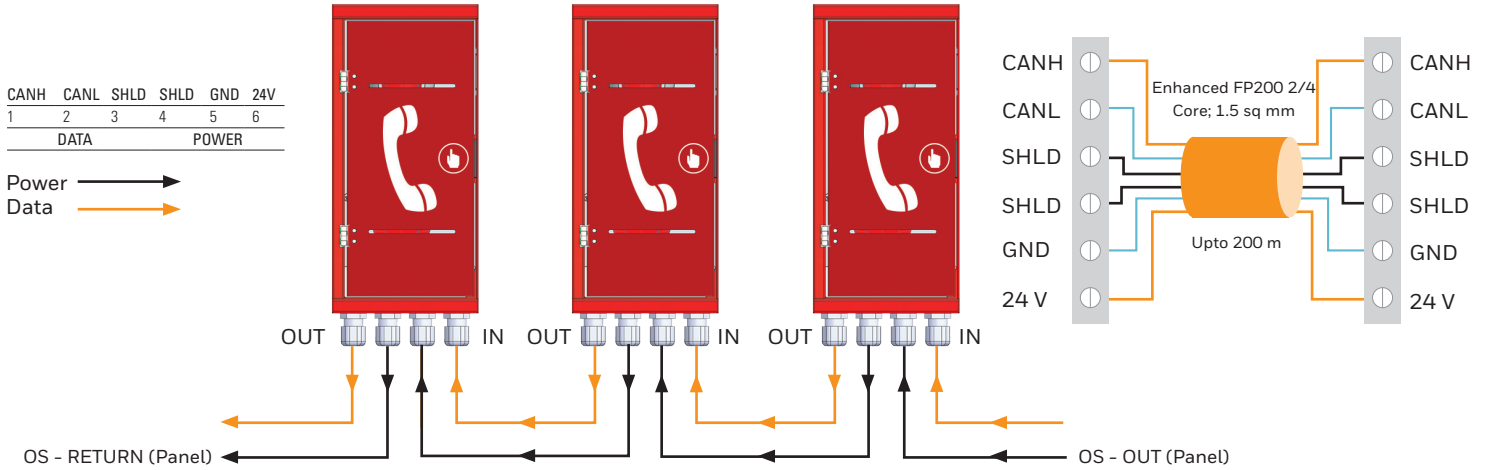
Step 8
Re-connect ground cable.
Assemble the unit.



Step 9
Close the unit

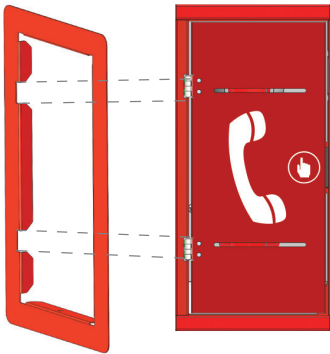


Wiring

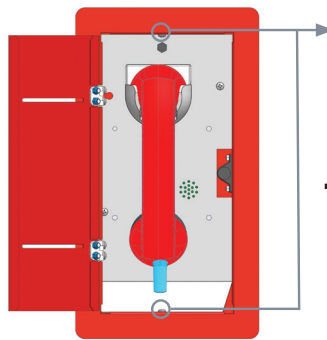


Flush mount process

Step 1
Insert Bezel in
gap provided



Step 2
Assemble
screws



Step 3
Close
the unit

