

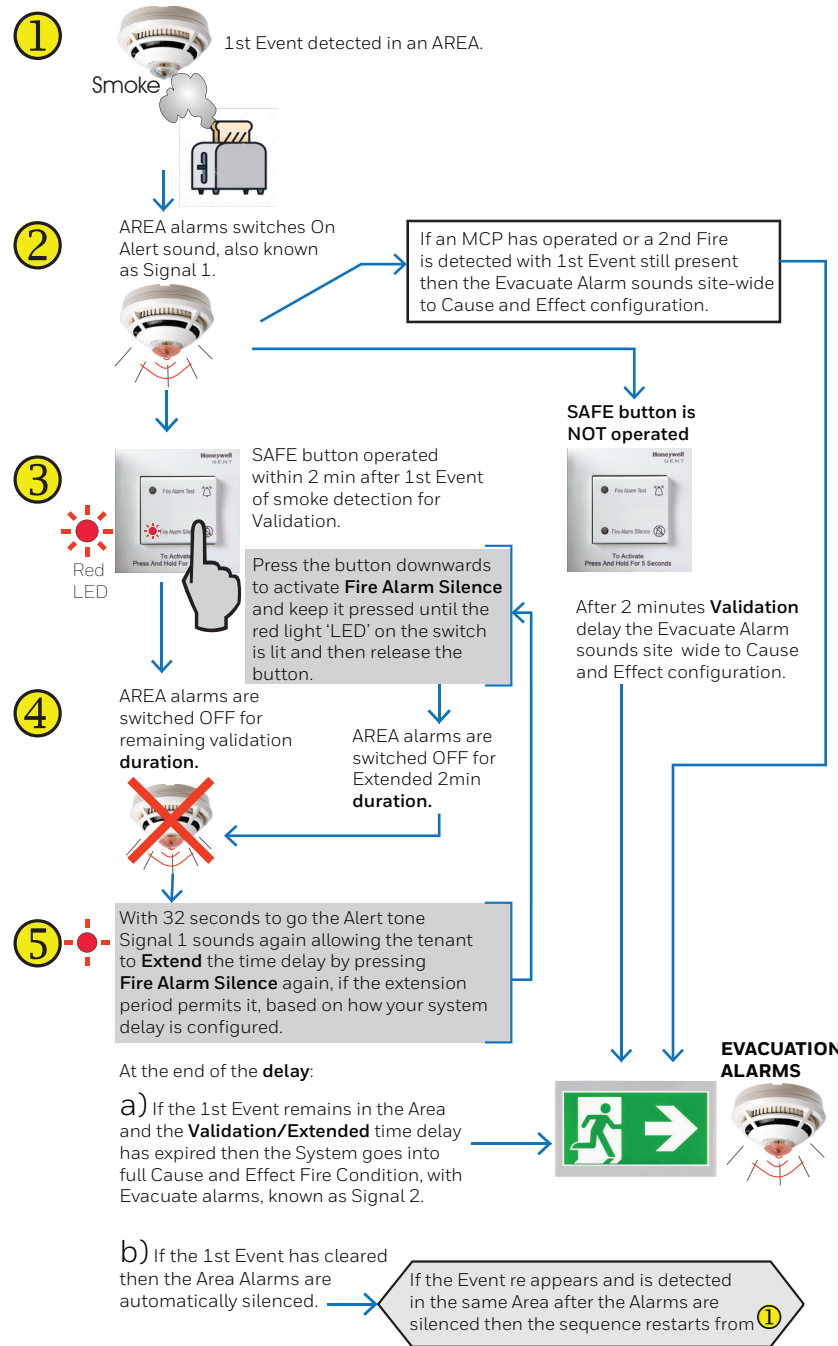
Operating instructions for SAFE system Double and Single button switches

The SAFE System switches are used to manage alarms in an 'Area' which can be a dwelling inside a building.

Note: The Area alarm delays will be different if your site has custom time delays.

This illustrated steps below shows what happens when using the SAFE system with standard default delay settings.

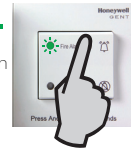
Event Detection and Area Alarm management



Area Alarm Test

The Alarms in an Area Alarms must be tested monthly to check they are working.

The Area Alarm Test must be done during Normal Non-Event condition only.



Using the Double SAFE Button

Press the button upwards to activate **Fire Alarm Test** and keep it pressed until the green light 'LED' on the switch is lit and then release the button to STOP the Test.

OR



Using the Single SAFE Button:

Press the button downwards to activate **Fire Alarm Test** and keep it pressed until the red light 'LED' on the switch is lit and then release the button to STOP the Test.

To Disable Area Smoke Detection

Under normal panel healthy condition, such as during Non Event condition it is possible to disable, switch Off the Area's smoke detection.

1

Using the Double SAFE Button only:

Press the button downwards to activate **Fire Alarm Silence** on the switch and keep it pressed until the red light 'LED' on the switch is lit and then release the button. This will result in the Area smoke detection being disabled for 15 minutes.



Over the smoke disablement period of 14.5 minutes and on pressing the **Fire Alarm Silence** button again it will re-enable the Area smoke detection.



During the last 30s of 15 minutes disablement period a warning is given by a flashing red LED on the switch to inform the Area detection is about to be re-enabled. The detection is enabled as no action was taken to press the SAFE button.

2

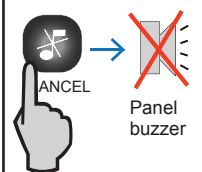
Extension of Disablement:

During the last 30s of the 15 minutes detector disablement period you can extend the disablement by a further 15 minutes by pressing the **Fire Alarm Silence** button.



When the switch is operated in this manner it is possible to further disable Area detection for further 15 minutes with maximum disablement period of up to 1 hour

Control Panel



The Display is held for 5 minutes after detection of 1st Event, the Smoke detection. At the end of the 5 minutes period an automatic Panel Reset happens to return the panel to Normal condition.

Fire **Zones**

```
Fire 1 01:59 15:45
1stCONF::Zone 1
First Fire occurred at:
Time: 14:43.10 Sat 4 May 2019
```