

# ES Detect

Our ES Detect conventional range offers high quality sensors and advanced detection.

The ES Detect automatic detector is a non-addressable detector specifically designed for operation on conventional systems. The range not only includes intelligent algorithms for fire detection but also a wide range of different types of detectors.

**Fixed heat detector:**

Automatic heat detector with fast semiconductor sensor to guarantee reliable detection of fires with strong heat generation.

**Fixed heat detector class B:**

For increased operating temperature according to EN 54-5 class B.

**Rate-of-rise heat detector:**

Automatic heat detector with fast semiconductor sensor to guarantee reliable detection of fires with rapidly rising temperatures and integrated fixed temperature function for the detection of fires with slowly rising temperatures.

**Optical smoke detector:**

Optical smoke detector to guarantee safe and early detection of fire.



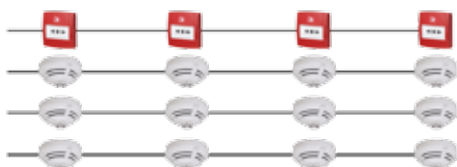
GENERAL SPECIFICATION	
<b>Operating voltage</b>	8 to 42 V DC
<b>Alarm current @ 9 V DC</b>	typ. 9 mA
<b>Air speed</b>	0 to 25.4 m/s
<b>Storage temperature</b>	-25 °C to 75 °C
<b>Air humidity</b>	< 95 %
<b>Type of protection</b>	IP43 (with base + option)
<b>Material</b>	ABS
<b>Color</b>	white, similar to RAL 9010
<b>Weight</b>	ca. 110 g
<b>Dimensions</b>	Ø: 117 mm H: 49 mm (62 mm incl. base)

## KEY FEATURES

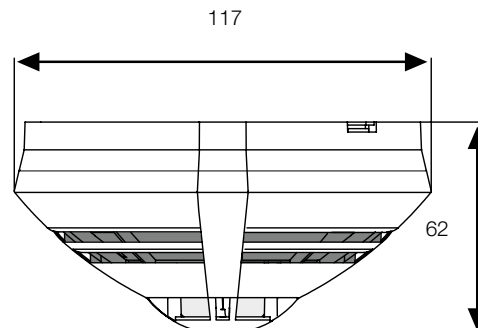
- Non addressable detector for conventional areas
- Wide range of different detector types
- Indicates detector contamination and implements quiescent value tracing in accordance with the current standards and directives
- Complete self-monitoring
- Optimum adjustment to ambient conditions through configurable parameters
- Up to 30 detectors per detection group
- Integrated fault, alarm and operating hours counter
- Easy maintenance, reduced storage costs

**TECHNICAL SPECIFICATION**

<b>Type</b>	Heat - Fixed Temp	Heat - Fixed Temp Type B	Heat Rate of Rise	Optical
<b>Part number</b>	800171	800177	800271	800371
<b>Quiescent current</b>	approx. 25 µA	approx. 25 µA	approx. 25 µA	approx. 30 µA
<b>Application temperature</b>	-20 °C to 50 °C	-20 °C to 65 °C	-20 °C to 50 °C	-20 °C to 72 °C
<b>Detector category and approvals</b>	EN 54-5 A1S	EN 54-5 BS	EN 54-5 A1R	EN 54-7



Z1  
Z2  
Z3  
Z4



**ORDER CODES**

<b>Model:</b>	<b>Description:</b>
800171	Fixed heat detector
800177	Fixed heat detector, class B
800271	Rate-of-rise heat detector
800371	Optical smoke detector
805590-D	Detector base complete with diode

**Honeywell**

Tel: +44 (0) 116 246 2000  
 Fax: +44 (0) 116 246 2300  
 Email: [hlsuksalesupport@honeywell.com](mailto:hlsuksalesupport@honeywell.com)  
 140 Waterside Road  
 Hamilton Industrial Park  
 Leicester  
 LE5 1TN

November 2015  
 © 2015 Honeywell International Inc.

